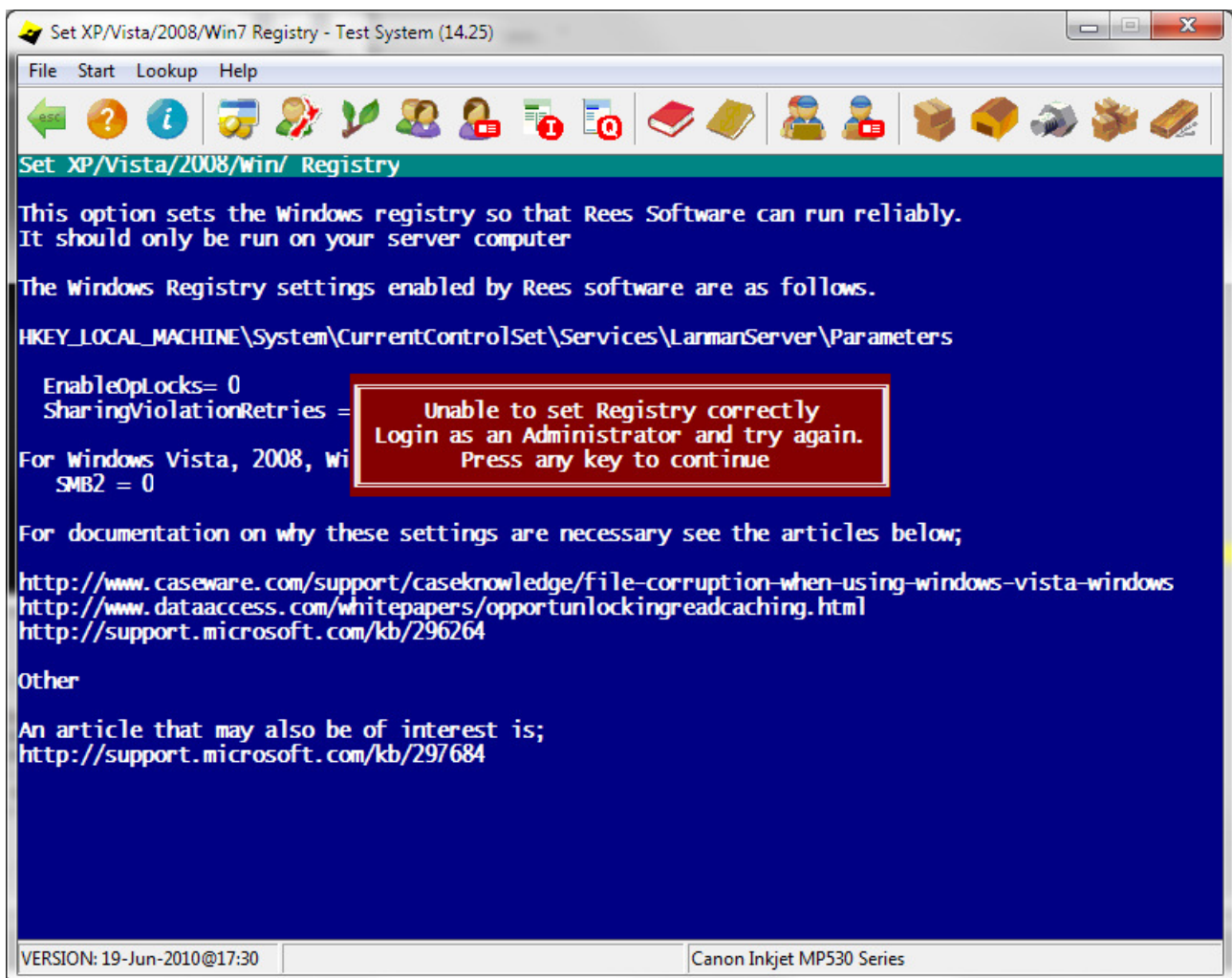


Setting up your computers to allow Rees Software to work correctly

Rees software products use the Microsoft Visual Foxpro format file structure to store data. This format is a free table structure which has data stored in individual files within a folder on one of your computers. These files have an extension of .dbf and .fpt. Data in these files is accessed through indexes which have a file extension of .cdx.

The computer where the files are stored and shared by all users of the Rees program is called the **server**. For Rees data to be maintained correctly on a network the Windows registry on the **server** computer must be set correctly.

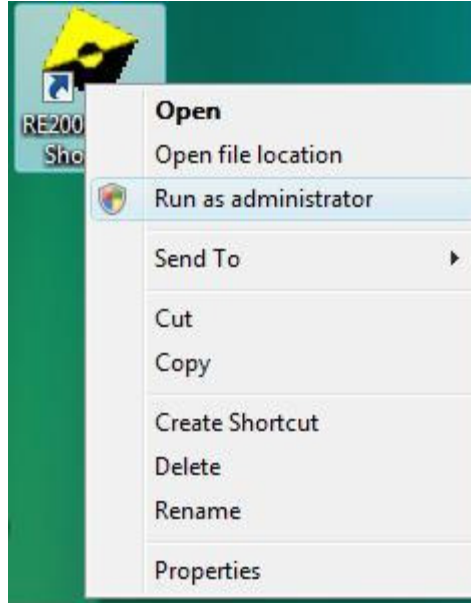
Listed at the end of this document are the registry settings that are required on the **server**. To ensure that the registry is set correctly on your **server** you simply need to run a copy of Rees program on the **server console** while logged on as an **Administrator**. Run option 14.25 in the Rees program to set the registry correctly. The **server** must be rebooted if the registry is changed.



If you are logged in as an **Administrator** on the **server** and you get the above message while running option 14.25 in Rees, it will be caused by the “User Access Control” feature in Windows

Vista & Windows 7 blocking access to the registry. In this case you need to explicitly run Rees as an **Administrator**;

1. Position the mouse pointer over the Rees shortcut on your **server** “Windows Desktop”
2. Click the right mouse button
3. Select “Run as **administrator**” - see below
4. You may get an additional dialog box asking you to “Allow” the program to run. Click on the “Allow” option.



The setting of the Windows Registry only needs to be done once. You do not have to log into Windows as an **Administrator** in the future.

Our company policy is that you must implement these settings to be able to run Rees software reliably. If you choose not to, or your computer technicians advise you not to and you take their advice, then you understand that **you** accept the risk of corrupt data.

The Windows Registry settings enabled by Rees software are as follows.

HKEY_LOCAL_MACHINE\System\CurrentControlSet\Services\LanmanServer\Parameters

EnableOpLocks= 0
SharingViolationRetries = 0

For Windows Vista, 2008, Windows 7 or later
SMB2 = 0

For documentation on why these settings are necessary see the articles below;

<http://www.caseware.com/support/caseknowledge/file-corruption-when-using-windows-vista-windows>

<http://www.dataaccess.com/whitepapers/opportunelockingreadcaching.html>

<http://support.microsoft.com/kb/296264>

Another article that may also be of interest is;

<http://support.microsoft.com/kb/297684>