

## THIS ISSUE:

- New employee
- Windows 95/98/NT/2000
- General Ledger
- Bank Statement Reconciliation
- General Knowledge Quiz

*This newsletter assumes that you are running the latest version of Rees2000. You can update your version of Rees2000 via main menu option **14.8***

## Keri's next holiday

Yes, well it seems to be the year that Keri is getting a lot of mileage from her annual holiday leave.

First there was the VW South Island tour, where Keri and her husband travelled with approximately 40 other VW Kombi's, they managed to clock up over 3,500 km in the twelve days visiting many must see places in NZ.

Keri's next holiday is in June, commencing the last weekend in May and ending 24th June. Keri and her husband are travelling overseas for these 4 weeks on holiday.

If you have any General Ledger queries please contact Keri prior to her departure to ensure your questions are answered.

*Well, we are now into the 5th month in our calendar, time sure does fly by. Winter seems to be steadily approaching with the downpour of rain that Southland and Fiorland shocking us out of our late Indian Summer abruptly into a cold winter. Rugby World Cup tickets are now on sale and now is a good time to ensure your taking advantage of our latest features in Rees2000*

## New Employee - Sandy McNeilly

Sandy joins Rees from the start of May. Sandy has a Bachelor of Commerce and Management (BCM) from Lincoln University (1992) in which he majored in applied computer programming. Sandy has 18 years experience in the IT industry, working in technical and consulting roles.

Sandy is 38 years old, married to Simone and has 3 children. Sandy enjoys catching crayfish for Keri, loves the tropics, food and drink.

Sandy will initially undergo some intensive training to learn and support the Rees program. Sandy will then continue to provide support and will also be assisting Peter with the programming side of business.

*Note from Keri, Sandy has yet to prove his claim regarding catching (& sharing) any crayfish.*

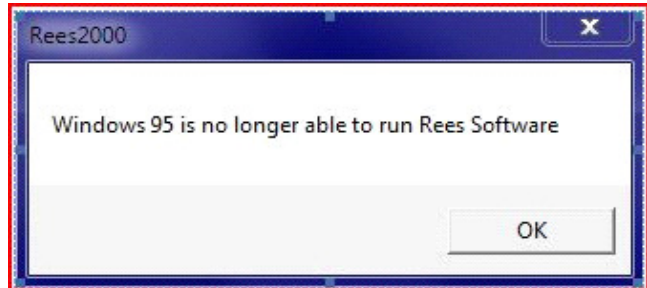
## Bank Statement Reconciliation

If you use the Cashbook module and are not taking advantage of the Reconcile Bank Statement option, the results in both time savings and ease of reconciliations then read on. Rees2000 menu option (8.18) Reconcile Bank Statement, allows you to add Cashbook payments, receipts and transfers without leaving the reconciliation process. From this screen you know your bank statement balance before printing the reports. It's easy to switch to this option and takes the headaches out of Cashbook balancing.

Getting started is easy: 1) reconcile all cashbooks up to a bank statement; and then; 2) run option (8.13.11) Set Reconciliation flag. Once this is done option (8.18) is now able to be used to reconcile your bank statements. Give it a go!

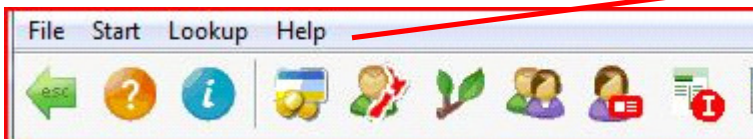
## Windows 95 OS

From 1 January 2010 Rees2000 ceased support for the Windows 95 operating system. From Rees2000 version dated 28-Apr-2010 or later, Rees2000 will simply not work if you are using Windows 95 as your operating system. A message will display advising this, as below. If your organisation uses Terminal Services to access Rees2000, then you may still be able to utilise Windows 95 workstations on your network, please check with your computer systems administrator.



## How do I know what my Operating Systems are? (Each workstation on your network must be checked individually)

When in Rees2000, at the top of the screen you have a grey toolbar, click on Help, then when the menu displays, on 'About Rees2000'. Or Alternatively press the green a.



A Rees2000 screen will display full of information, similar to the display below.

```

About Rees. REES SOFTWARE & SYSTEMS LTD.
This program was developed by;
Rees Software & Systems Limited
P O Box 1039
Nelson 7010
New Zealand
Phone: 0800 733 739
Fax: 64-3-5468841
Web: www.rees.co.nz
e-Mail: support@rees.co.nz
System Information
Program Folder(R:\)
Program name(re2000.exe)
Data Folder(R:\data\))
First Installed(20/04/2000)
RE2000 Release(VERSION: 30-Apr-2010@17:00)
Compiler(xHarbour build 1.2.1 Intl. (SimpLex) (Rev. 6468))
Printers Installed(6)
OKI C5550 MFP(PCL) (Top Tray)
OKI C5550 MFP(PCL)
Microsoft XPS Document Writer
CutePDF Writer
Barcode printer
\\rees\Fax
Windows Clipboard
Rees Default Printer
OKI C5550 MFP(PCL)
Available Drives(10)
A:\ REMOVABLE
C:\ FIXED
D:\ FIXED
E:\ CD ROM
F:\ FIXED
K:\ \\Rees\keri\
N:\ \\Rees\n-drive\
P:\ \\Rees\programs\
T:\ \\Rees\t-drive\
Total Physical RAM(2,047)
RamInUse%(53)
Rees UpTime(000:01:40:56)
Computer UpTime(003:02:28:53)
IsUserAnAdmin(No)
Registry Set ok(Yes)
Netname(KERI-PC)
WTS_client()
isWTSclient(No)
SystemRoot(c:\windows)
WinDir(c:\windows)
Free TempSpace(c:\Users\Keri\AppData\Local\Temp\): 34,238MR:\
Free DataSpace(R:\data\): 168,044MB(NETWORK)
*.frr Files(in.frr,bitmap.frr,qu.frr)
Screen Size(1680 x 1050)
Operating System(Windows Vista Professional 6.00.6002 Service Pack 2) CPUS: 2
ReIndy Version(01Aug09@00:00) Indy Version(9.0.50)
```

The second to last line, shows your operating system, in this case Windows Vista.

## Windows 98, ME, NT 4.0 & 2000 Operating Systems

From 1 August 2010, if you are running these operating systems (see above to determine your versions of Windows), then you will get the following message display when you start a new Rees2000 session.

The version of windows you are using on this computer  
[windows 98, windows NT 4.0 or windows 2000]  
will no longer be able to run THIS program  
after 31 January 2011  
Press any key to continue

When you press any key you can then continue to log into Rees2000. These systems will not run the Rees2000 program after the 31 January 2011.

This early warning provides a reasonable time frame for clients to replace or upgrade any computers necessary to avoid possible disruption to their business.

## Why is Rees2000 No Longer Supporting These Operating Systems?

It is no longer possible for us to easily maintain support for these older operating systems and at the same time take advantage of new features in the newer versions of Windows.

For clients who have a lot of pre Windows XP computers we STRONGLY recommend an upgrade or consider moving to a Windows Terminal Server environment. Talk to your computer support provider for more information regarding upgrade options.

## Rees2000 General Knowledge Test

Questions:

1. Which function key, when in invoicing allows you to see the stock items previously sold to this client, including the quantity, date and price?
2. Which function key, when in purchase order entry (5.1), allows you to copy from a quote, invoice, sales order or job quote? What is the same function key also for in this screen?
3. Which function key, when in purchase order entry (5.1) and you use the Sales Order module, enables to view the backorders for the stock code, whilst on the stock code field?
4. How can you produce a GST exempt invoice?
5. What is the easiest way to credit an entire invoice?

Answers can be obtained from our website, using the link below:

<http://www.rees.co.nz/company/news/rees2000%20general%20knowledge%20test%20answers.pdf>

# Rees2000 General Ledger Module

Don't close your period 12 in General Ledger. This means that you would perform a Year End Update on the General Ledger. WHOOPS!

To avoid any confusion, here's what happens, in summary:

Debtors Period ends—are shown by date (i.e. period ended 30 Apr 2010, next period is 31 May 2010, etc), same for Creditors.

Cashbook Period end is by period number, i.e. 1 = 1st month of the year, etc. The Cashbook can only be open for 12 periods, so if 31 March is your balance date, when doing your period end update the next period = 1 and it is your year end.

The General Ledger however, whilst similar to the Cashbook, in that if you do a period end for period 12, your next period is 1, we DON'T recommend closing the General Ledger period end for period 12, until your accountant has completed your Financial Statements for that year and you have entered any required journals to bring your reports in line with these final accounts. Then, and only then, do you perform your General Ledger Year End Update. This is normally 3-6 months or even up to 11 months after your financial year end.

In the meantime, you need to continue operating your business, and your monthly financial reports. With this in mind Rees2000 enables you to operate, i.e. interface, journal, report on the new financial year, whilst still having your last year open. This is what we refer to as period 13, 14, 15 etc up to 24.

## Hard Work Quotes

### Vincent Van Gogh:

Great things are not done by impulse, but by a series of small things brought together.

### Theodore I. Rubin:

Happiness does not come from doing easy work but from the afterglow of satisfaction that comes after the achievement of a difficult task that demanded our best.

### Franklin D. Roosevelt:

Happiness lies in the joy of achievement and the thrill of creative effort.

### Bruce Jenner:

I learned that the only way you are going to get anywhere in life is to work hard at it. Whether you're a musician, a writer, an athlete or a businessman, there is no getting around it. If you do, you'll win-if you don't you won't.

### Robert Townsend:

If you shoot for the stars and hit the moon, it's OK. But you've got to shoot for something. A lot of people don't even shoot.

